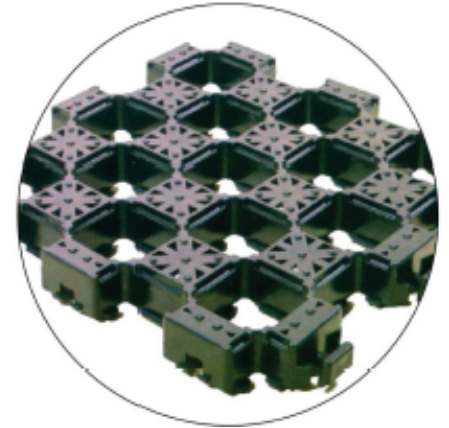


CellPave™ AP is a 'no-dig' anchored ground reinforcement paving tile.

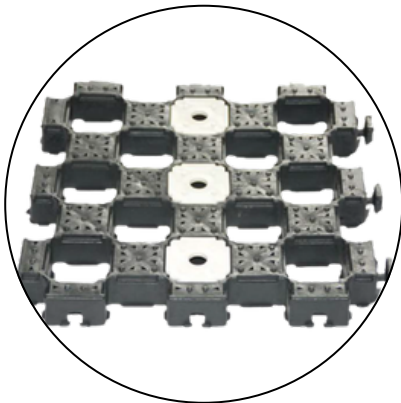
CellPave™ AP has a great deal of applications and may be used in many situations such as driveways, access tracks, vehicle parking, airfields, helipads, parks, caravan parks farms, golf paths, grass verges, mobility paths and many more.

Installing CellPave™ AP tiles is simple and easy. Using a vibratory roller CellPave™ AP can be placed in existing grass areas. If required, they can also be placed in soil and onto a prepared sub-base. Additionally, they can be also be upturned and back-filled with sand, soil or gravel.



DESIGN

CellPave™ AP has a unique design which suppresses resurgence of mud from below. The openings ensure effective drainage. Ground anchors on the underside of the tiles ensure the best possible fixing, even in poor ground or under heavy loads. Over time, the integration with the ground also increases as the existing grass root intertwines with the tile structure.



CellPave™ AP with snap-in markers

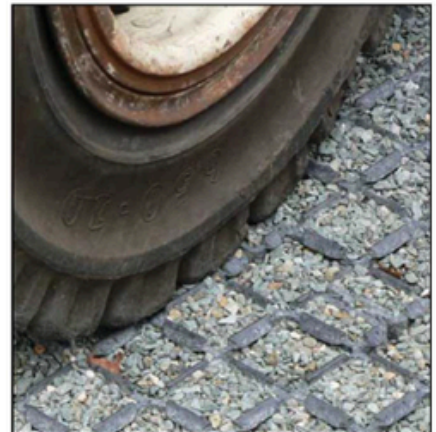


FEATURES

- Resistant to most aggressive substances
- Grass grows back through the tile, preserving the character of the environment
- Tiles allow water to pass through them
- Natural drainage maintained
- No splintering or risk of injury
- Planning permission not required for most applications
- No special tooling or skills required for installation
- Easy to install yourself in a very short time
- Tiles can usually be rolled into unprepared soft grass surface
- Can be removed later, if required
- Low cost when compared to alternative options
- Normally requires no excavation, unlike most other grass reinforcement products
- Robust Clip System
- Simple 'snap-in' markers available

APPLICATIONS

- Green parking areas
- Emergency vehicle access
- Temporary and permanent roadways
- Road protection
- Embankments
- Driveways
- Tree beds
- Golf walkways
- Caravan parking
- Ménages
- Hard standing storage areas



MATERIAL: Recycled PE/PP

TILE DIMENSIONS: 302mm × 302mm wide × 37mm (+/-2%) not including connecting lugs

MAT SIZE: 1220mm × 920mm (4 × 3 tiles)

WEIGHT: 6.2kg per m² (+/-2%) / 550 grams per tile

NOMINAL CELL DIMENSIONS: 50mm × 50mm

CLOSED SURFACE AREA: 50% / Raised points for grip

CONNECTION METHOD: Edge loops and tabs

CELL WALL THICKNESS: 5mm (+/-2%)

LOAD BEARING: Up to 160t/m² depending on ground conditions and preparation

COLOUR: Black

UV/FROST/OIL/SALT RESISTANT: Yes

PALLET DIMENSIONS: 1220mm × 920mm × 2340mm / Contains 876 pavers / 73 layers (80m²) / Total pallet weight 500kg